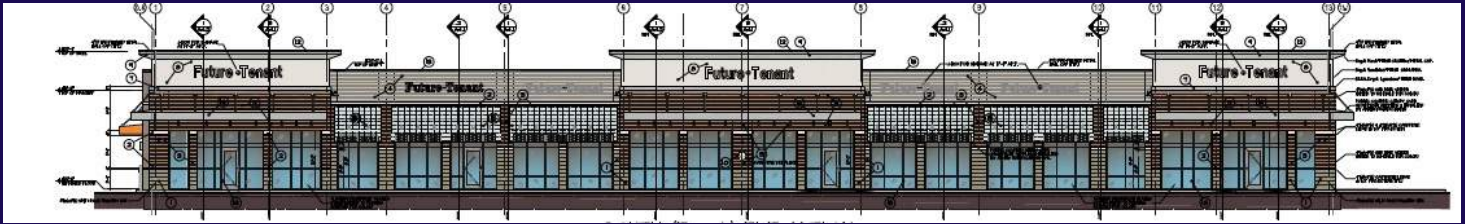


Villages At Anson IV Retail Center

COMING SOON - NOW LEASING!!!

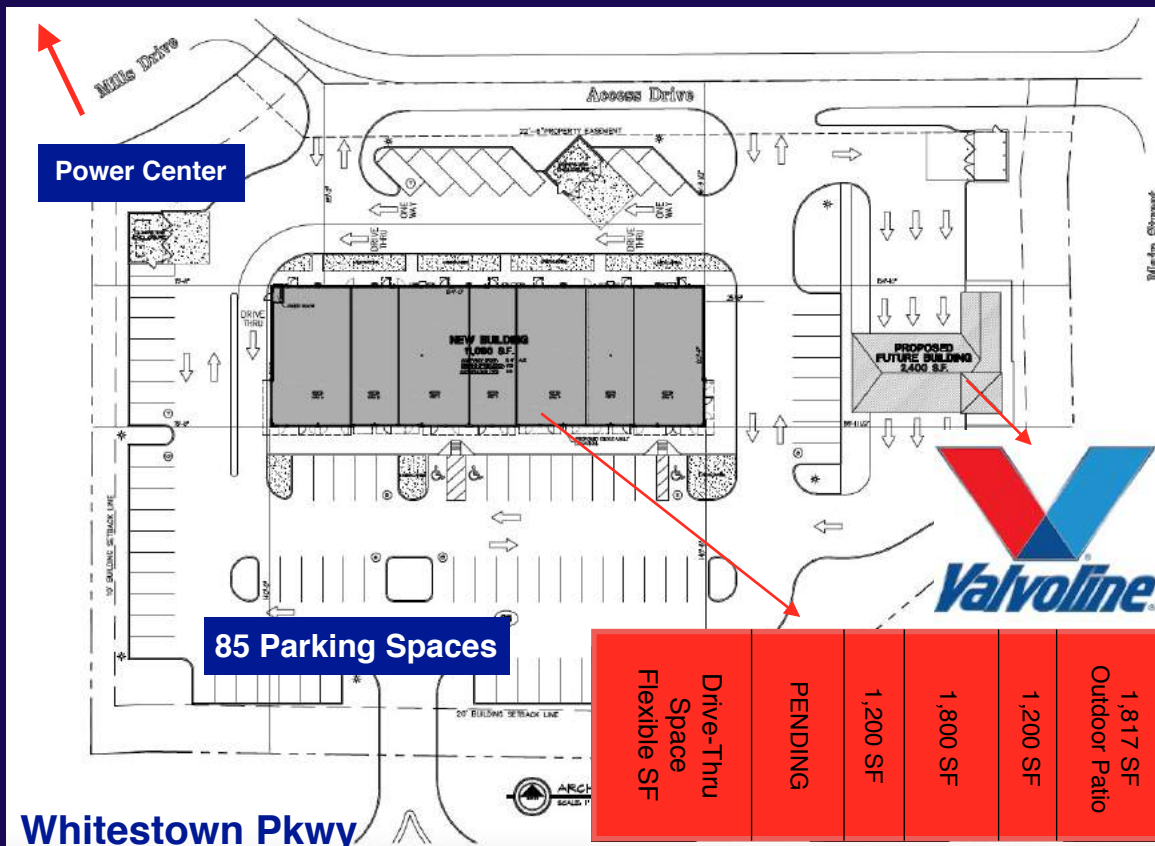
1,200 - 11,090 SQ FT Available



Retail Space Available

- Located on corner lot of Whitestown Pkwy and Main St.
- Whitestown Pkwy frontage means high visibility
- Significant daily traffic count on Whitestown Pkwy
- Drive - Thru Capability
- Space Available Sooner Than Any Other Developments

- 300,000 SF Power Center Opening Summer of 2018
- 300,000 SF Power Center behind this center
- Whitestown Indiana fastest growing community
- 63% increase in single-family housing permits since 2011
- IBJ article: <http://www.ibj.com/articles/62059-whitestown-sees-spike-in-single-family-home-permits>



Tyler Underwood
 tunderwood@revelunderwood.com
 office 317-578-9401 ext. 105

Villages At Anson Retail Center's



Villages at Anson Building I
 -Verizon -Nail Salon
 -Sports Clips -Chen's Wonk
 -Visionelle



Villages at Anson Building II
 -Pie Five
 -AT&T
 -Which Wich



Villages at Anson Building III
 -Dunkin Donuts
 -Classic Cleaners
 -Flamme Burger
 -XCEL Fit Club



Site Map

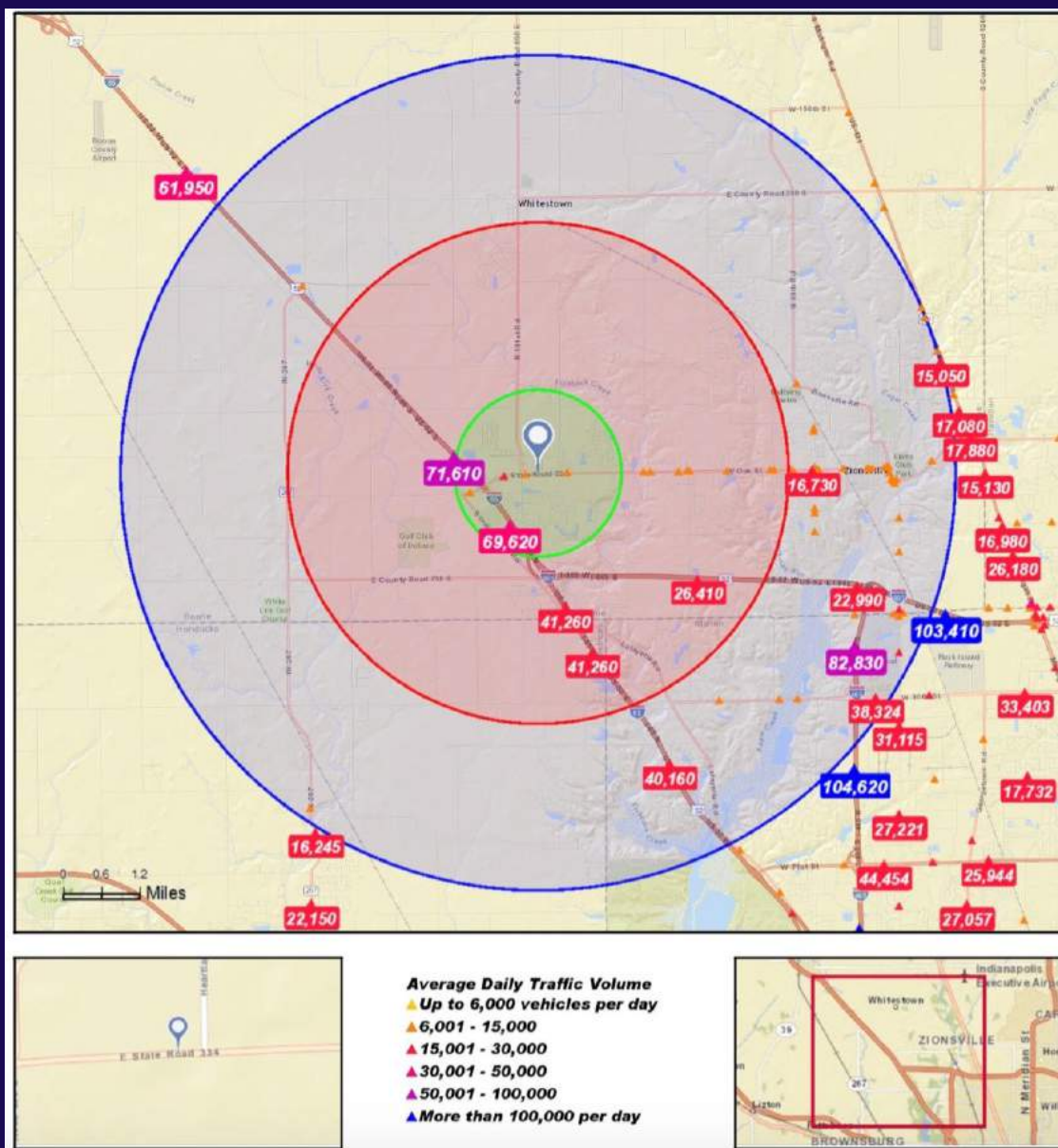
300,000 Sq. Ft. Power Center Behind Villages at Anson IV

Whitestown, IN – 300,000sqft – Opening Summer 2018



Tyler Underwood
 tunderwood@revelunderwood.com
 cell 317-345-6883
 office 317-578-9401 ext. 105

Traffic Counts and Demographics



Tyler Underwood
 tunderwood@revelunderwood.com
 cell 317-345-6883
 office 317-578-9401 ext. 105